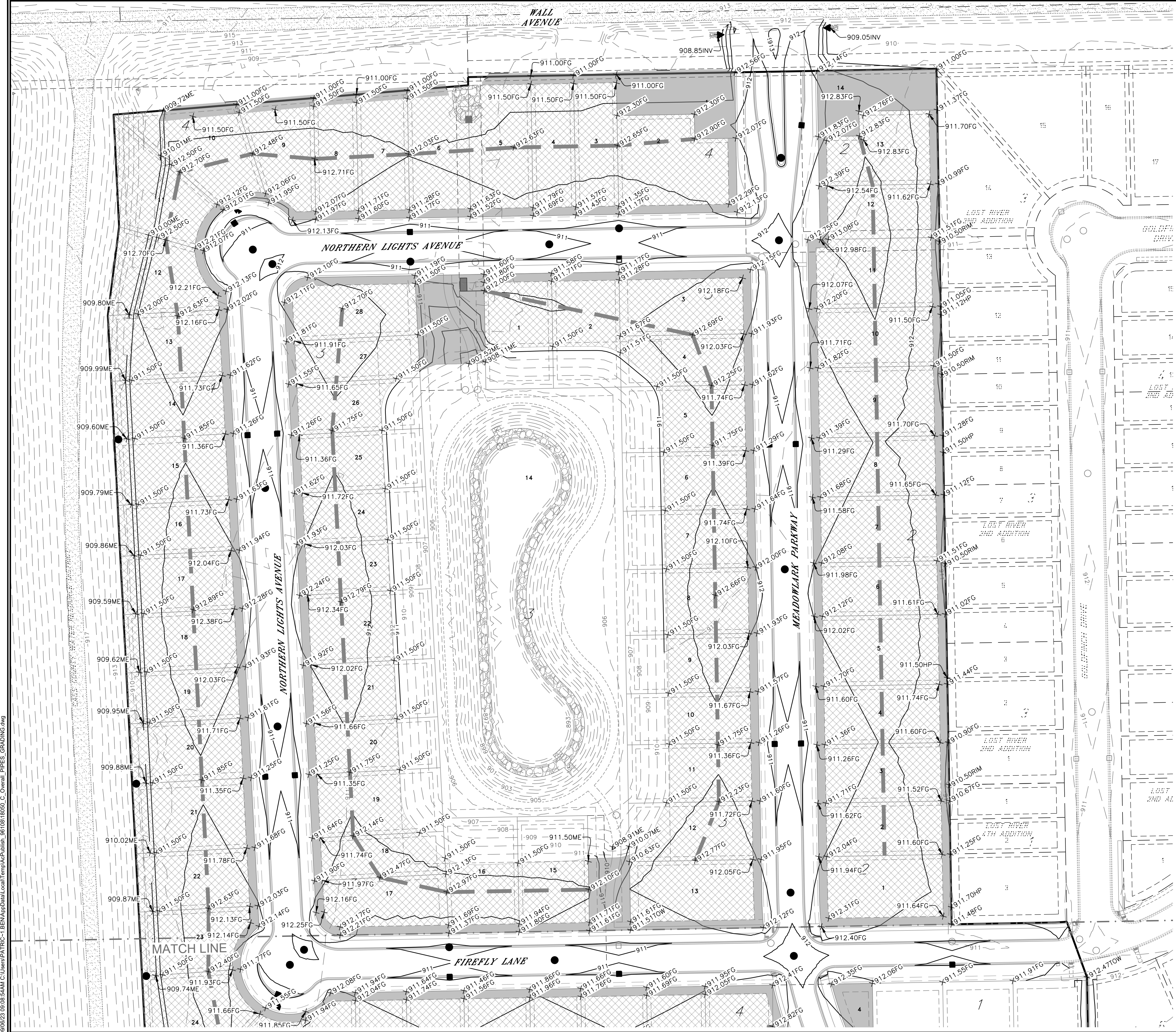
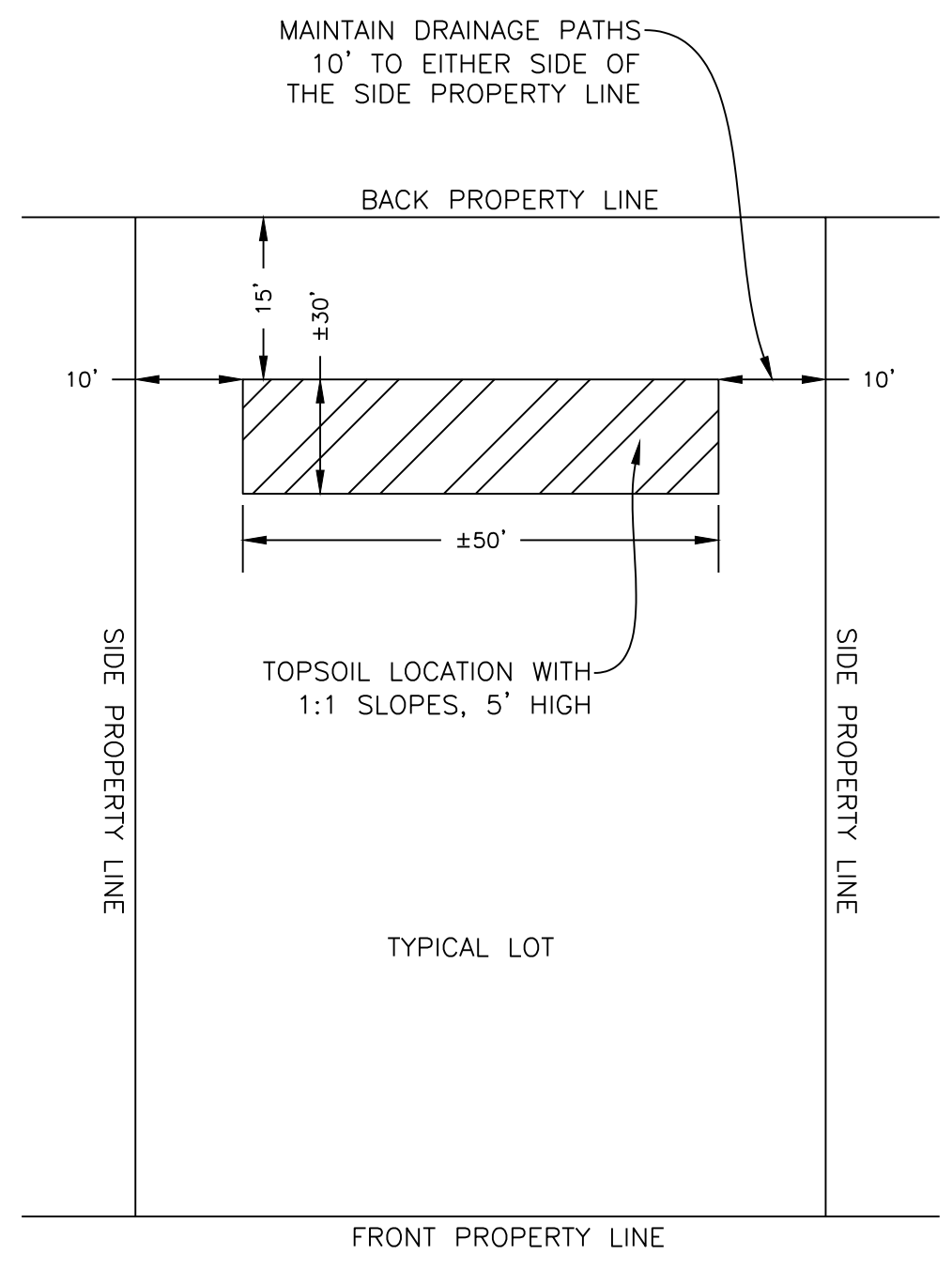


C:\Users\PATRICIA\OneDrive\Temp\Drawings\18050_01\18050_01.dwg

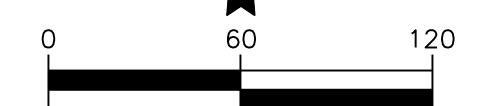
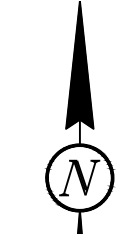


- REMOVE TOPSOIL, CUT/FILL TO FG, REPLACE TOPSOIL, SEED AND HYDROMULCH.
- REMOVE TOPSOIL, CUT/FILL CLAY TO FG, STOCKPILE TOPSOIL PER DETAIL, SEED AND STRAW MULCH.

NOTE:
 *** NO WORK OR MODIFICATIONS SHALL BE DONE WEST OF PROJECT WITHIN THE LIMITS OF THE ARMY CORE OF ENGINEERS FLOOD CONTROL PROJECT.



TYPICAL EXCESS TOPSOIL STOCKPILE LOCATION (NOT TO SCALE)



CALL BEFORE YOU DIG
 NORTH DAKOTA
 UTILITIES UNDERGROUND LOCATION SERVICE
 1-800-795-0555

LOWRY
 ENGINEERING
 1111 WESTRAC DRIVE - SUITE 108
 FARGO, NORTH DAKOTA 58103

REVISIONS
ADDENDUM #1 - 4/15/2020
REVISIONS #1 - 7/1/2020

**WATER, SEWER, STORM AND STREET
 IMPROVEMENT DISTRICT NO. 2020-4
 HORACE, NORTH DAKOTA
 SECTION 1: LOST RIVER 5TH ADDITION**

LE JOB #	18050
PROJECT DATE:	9/18/2020
CHECKED BY:	AJT
DRAWN BY:	PWB
APPROVED BY:	AJT
SHEET:	20 OF 77

OVERALL GRADING PLAN
 NORTH SECTION

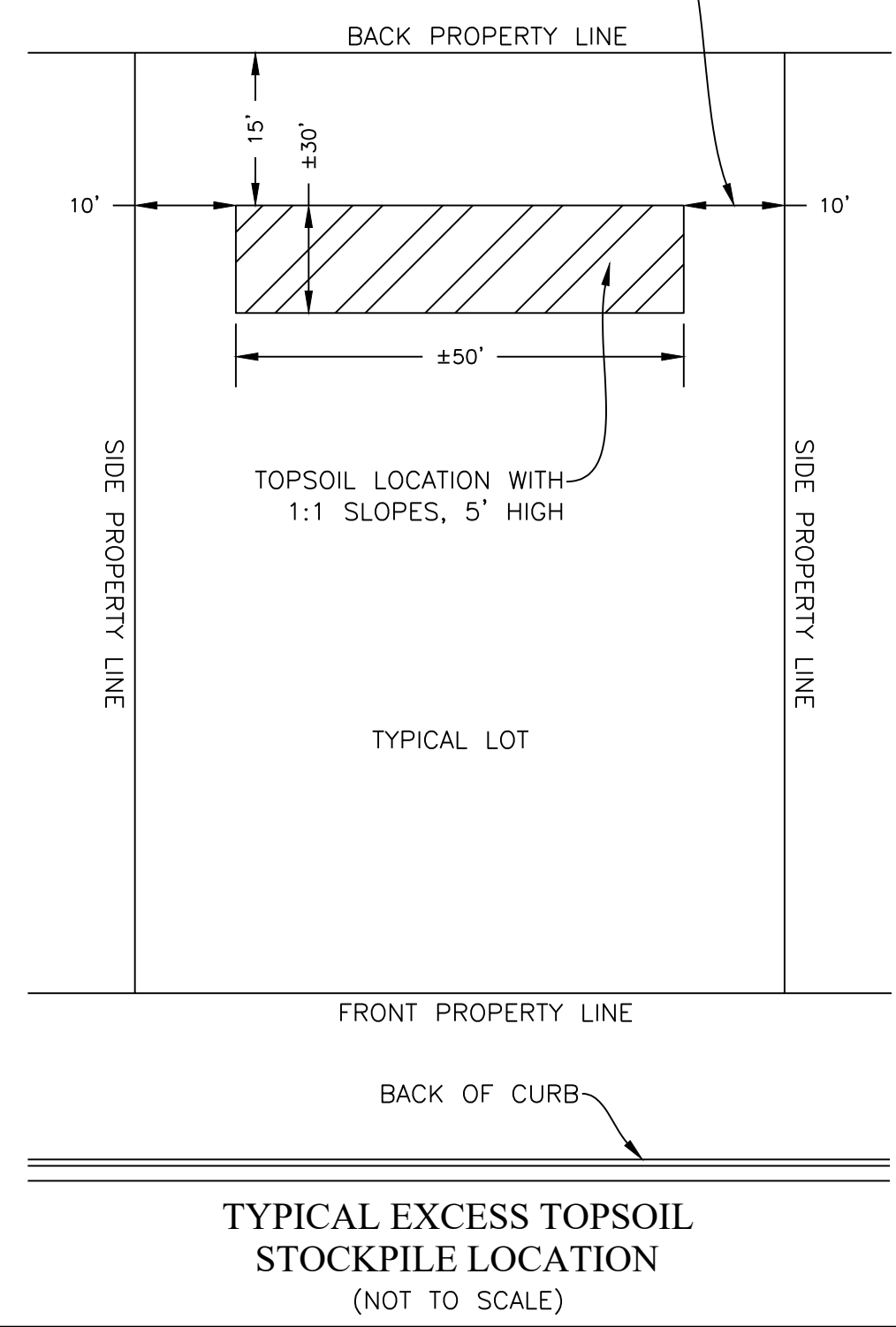
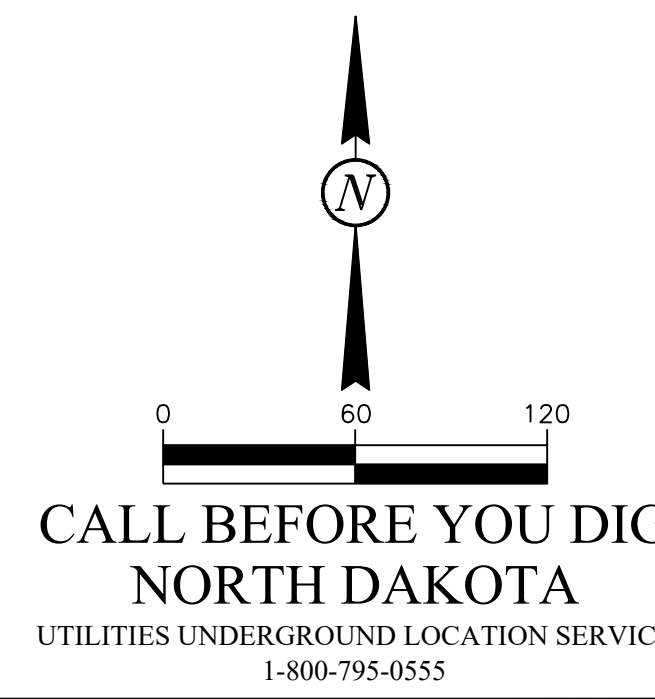
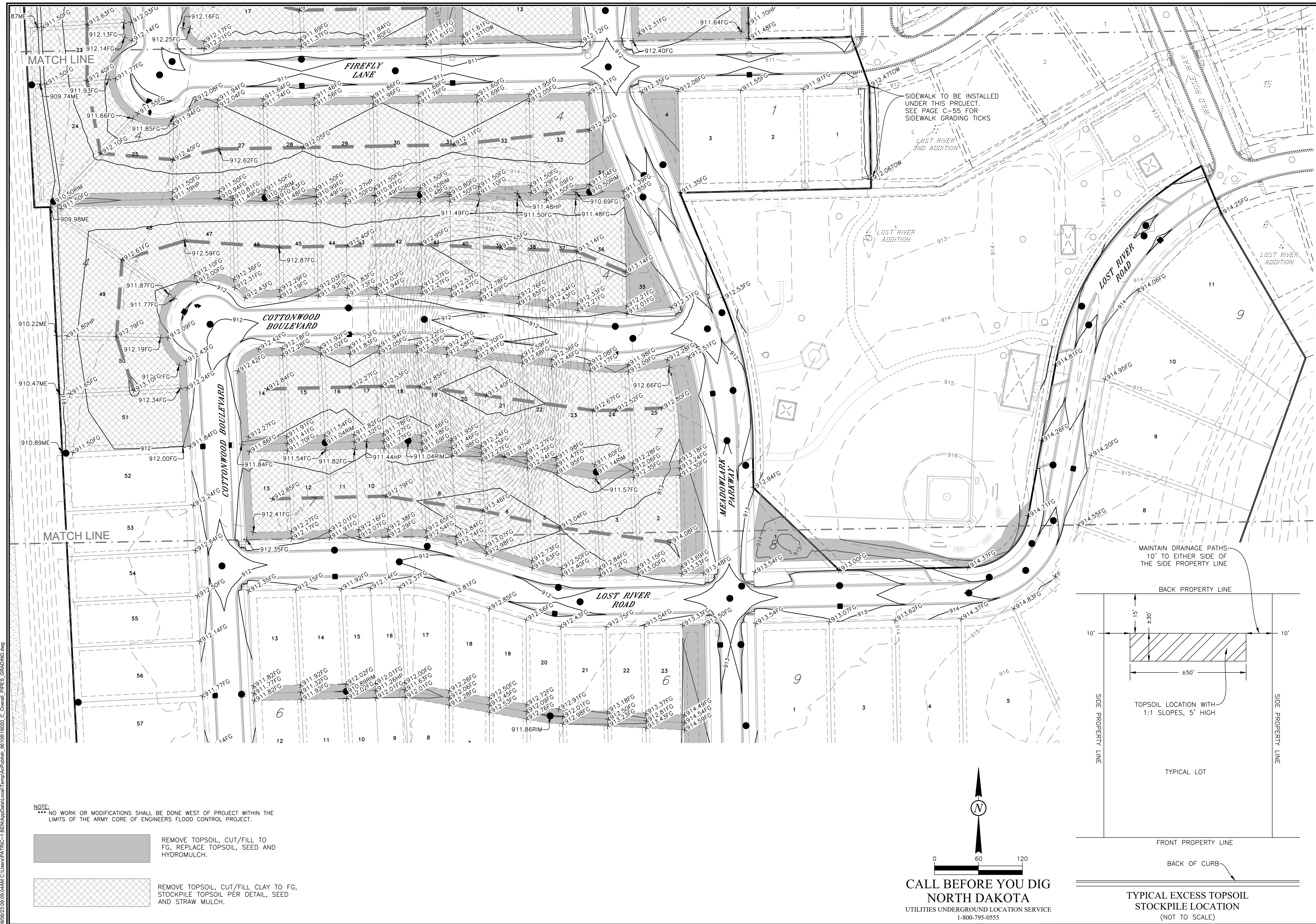
C-1-20

REVISIONS
ADDENDUM #1 - 4/15/2020
REVISIONS #1 - 7/1/2020

**WATER, SEWER, STORM AND STREET
IMPROVEMENT DISTRICT NO. 2020-4
HORACE, NORTH DAKOTA
SECTION 1: LOST RIVER 5TH ADDITION**

LE JOB #	18050
PROJECT DATE:	9/18/2020
CHECKED BY:	AJT
DRAWN BY:	PWB
APPROVED BY:	AJT
SHEET:	21 OF 77

OVERALL GRADING PLAN CENTRAL SECTION



NOTE:
*** NO WORK OR MODIFICATIONS SHALL BE DONE WEST OF PROJECT WITHIN THE LIMITS OF THE ARMY CORE OF ENGINEERS FLOOD CONTROL PROJECT.

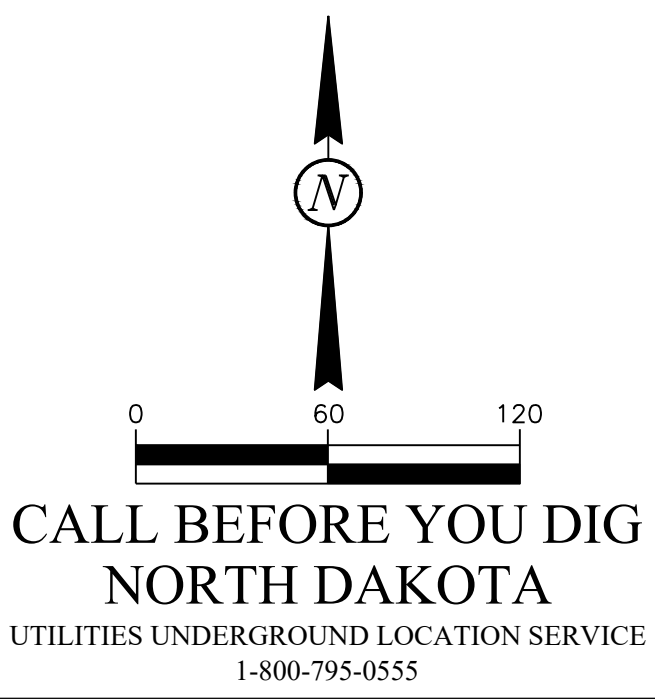
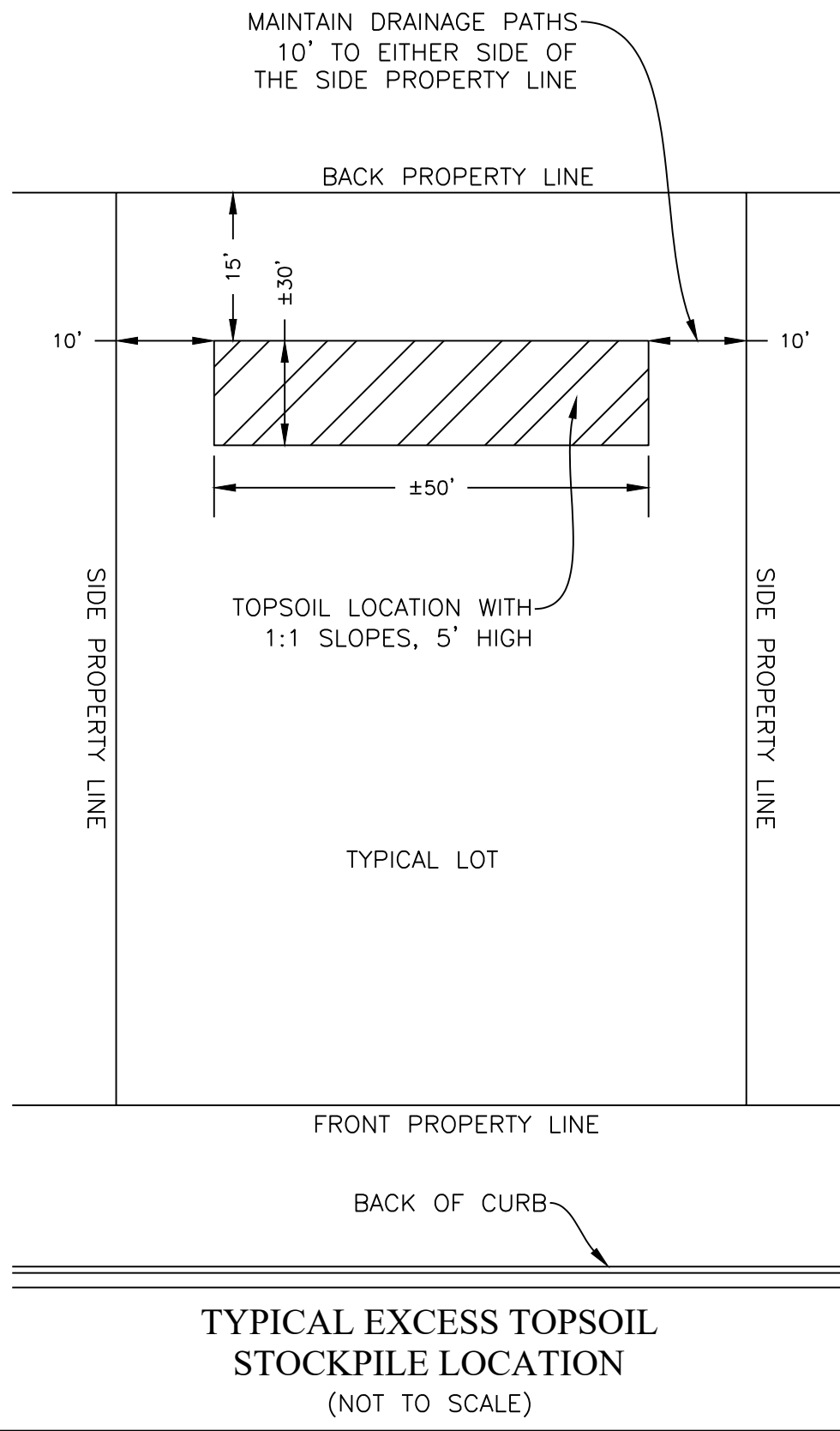
- REMOVE TOPSOIL, CUT/FILL TO FG, REPLACE TOPSOIL, SEED AND HYDROMULCH.
- REMOVE TOPSOIL, CUT/FILL CLAY TO FG, STOCKPILE TOPSOIL PER DETAIL, SEED AND STRAW MULCH.

C:\Users\PATRICIA-BENARD\p\Battal\scall\Temp\AcPublish_3610818050_C_Owvall_PIPES_GRADING.dwg

REVISIONS
ADDENDUM #1 - 4/15/2020
REVISIONS #1 - 7/12/2020

**WATER, SEWER, STORM AND STREET
IMPROVEMENT DISTRICT NO. 2020-4
HORACE, NORTH DAKOTA
SECTION 1: LOST RIVER 5TH ADDITION**

LE JOB #	18050
PROJECT DATE:	9/18/2020
CHECKED BY:	AJT
DRAWN BY:	PWB
APPROVED BY:	AJT
SHEET:	22 OF 77



NOTE:
*** NO WORK OR MODIFICATIONS SHALL BE DONE WEST OF PROJECT WITHIN THE LIMITS OF THE ARMY CORE OF ENGINEERS FLOOD CONTROL PROJECT.

REMOVE TOPSOIL, CUT/FILL TO FG, REPLACE TOPSOIL, SEED AND HYDROMULCH.

REMOVE TOPSOIL, CUT/FILL CLAY TO FG, STOCKPILE TOPSOIL PER DETAIL, SEED AND STRAW MULCH.

C:\Users\PATRICIA\OneDrive\Desktop\Temp\AcPublish\8610818050_C_Overall_PIPES_GRADING.dwg